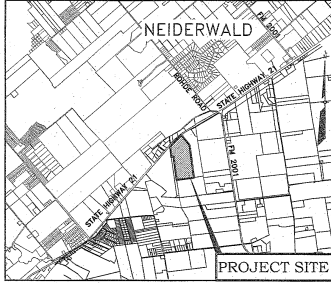
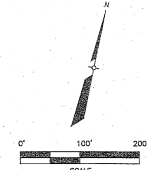


LAS ESTANCIAS SUBDIVISION 116.72 ACRES CITY OF NIEDERWALD CALDWELL COUNTY, TEXAS



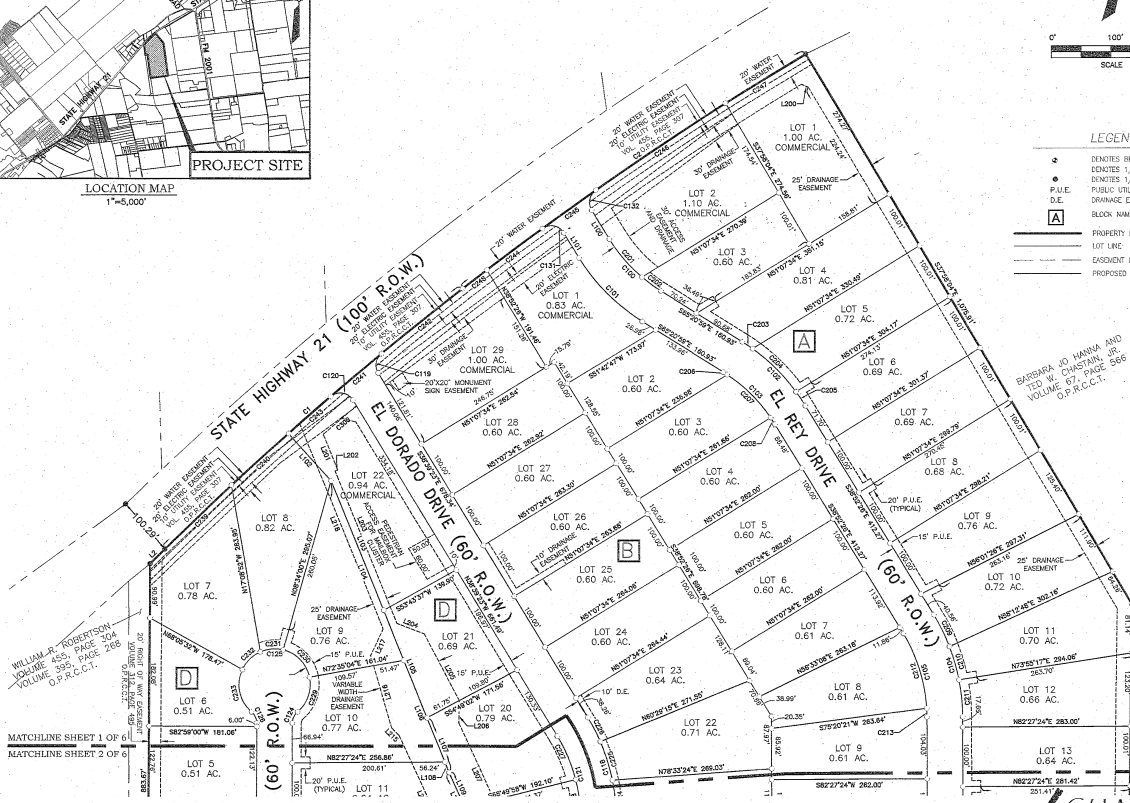
LOCATION MAP
1"=5,000'

PROJECT SITE

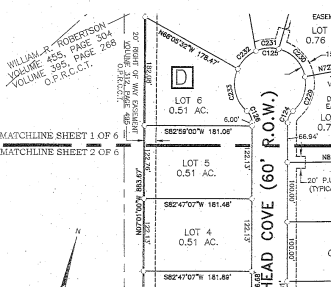


LEGEND

- DENOTES BENCHMARK (SEE NOTE)
- DENOTES 1/2" IRON ROD SET
- DENOTES 1/2" IRON ROD FOUND
- PUBLIC UTILITY EASEMENT
- DRAINAGE EASEMENT
- D.E. DRAINAGE EASEMENT
- A BLOCK NAME
- PROPERTY LINE
- LOT LINE
- EASEMENT LINE
- PROPOSED RIGHT-OF-WAY



LAS ESTANCIAS SUBDIVISION 116.72 ACRES CITY OF NIEDERWALD CALDWELL COUNTY, TEXAS



LOCATION MAP
1"=5,000'

PROJECT SITE

LEGEND

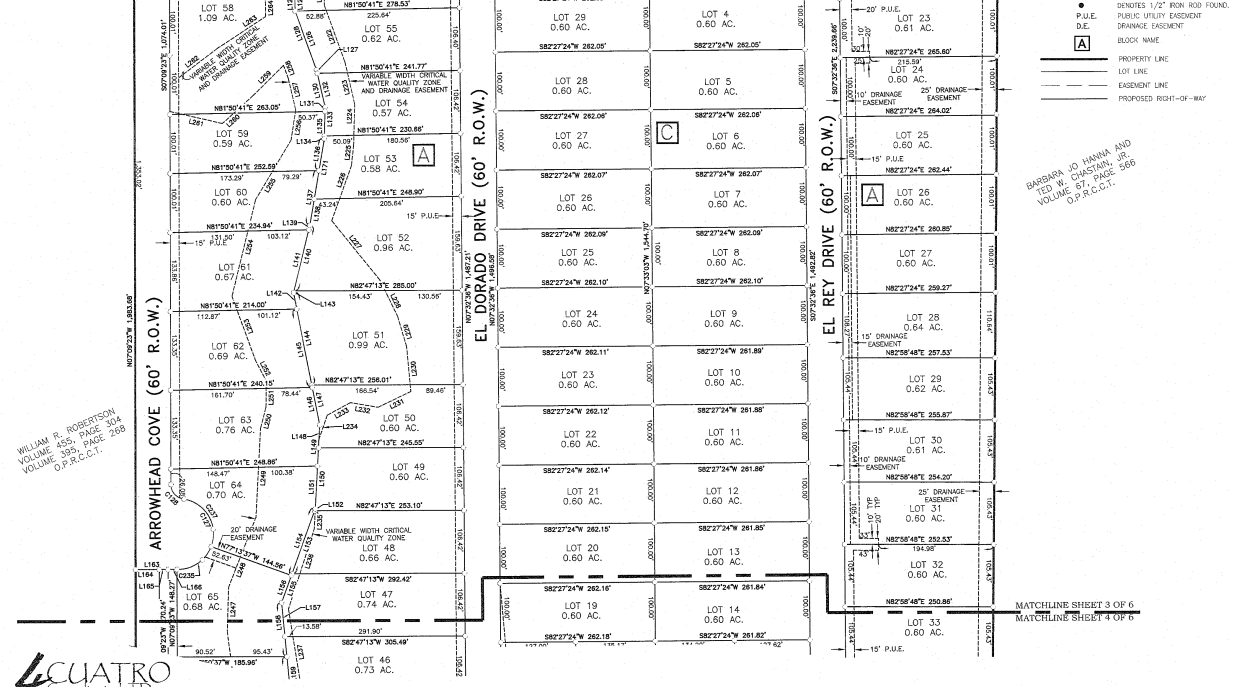
- DENOTES BENCHMARK (SEE NOTE)
- DENOTES 1/2" IRON ROD SET
- DENOTES 1/2" IRON ROD FOUND
- PUBLIC UTILITY EASEMENT
- DRAINAGE EASEMENT
- D.E. DRAINAGE EASEMENT
- A BLOCK NAME
- PROPERTY LINE
- LOT LINE
- EASEMENT LINE
- PROPOSED RIGHT-OF-WAY



LAS ESTANCIAS SUBDIVISION
116.72 ACRES
CITY OF NIEDERWALD
CALDWELL COUNTY, TEXAS

WILLIAM R. ROBERTSON
VOLUME 455, PAGE 304
VOLUME 395, PAGE 288
D.P.R.C.T.

MATCHLINE SHEET 2 OF 6
MATCHLINE SHEET 3 OF 6

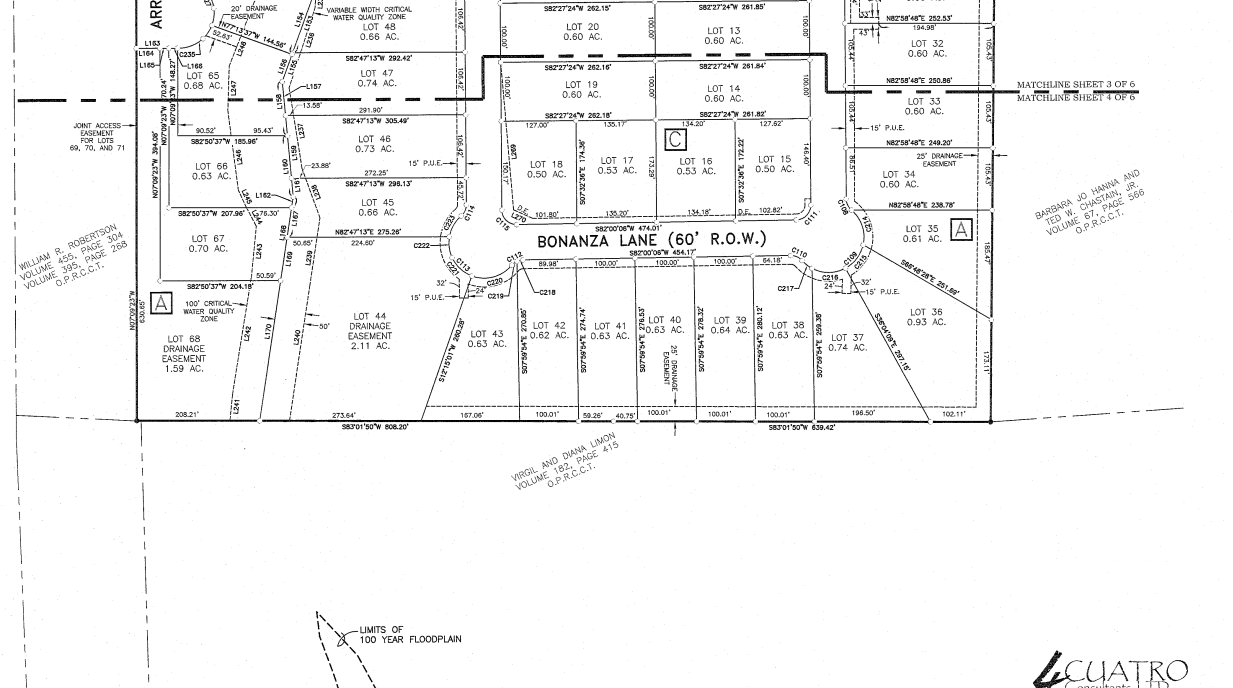


4 CUATRO
Consultants, LTD

LAS ESTANCIAS SUBDIVISION
116.72 ACRES
CITY OF NIEDERWALD
CALDWELL COUNTY, TEXAS

WILLIAM R. ROBERTSON
VOLUME 455, PAGE 304
VOLUME 395, PAGE 288
D.P.R.C.T.

MATCHLINE SHEET 3 OF 6
MATCHLINE SHEET 4 OF 6



4 CUATRO
Consultants, LTD