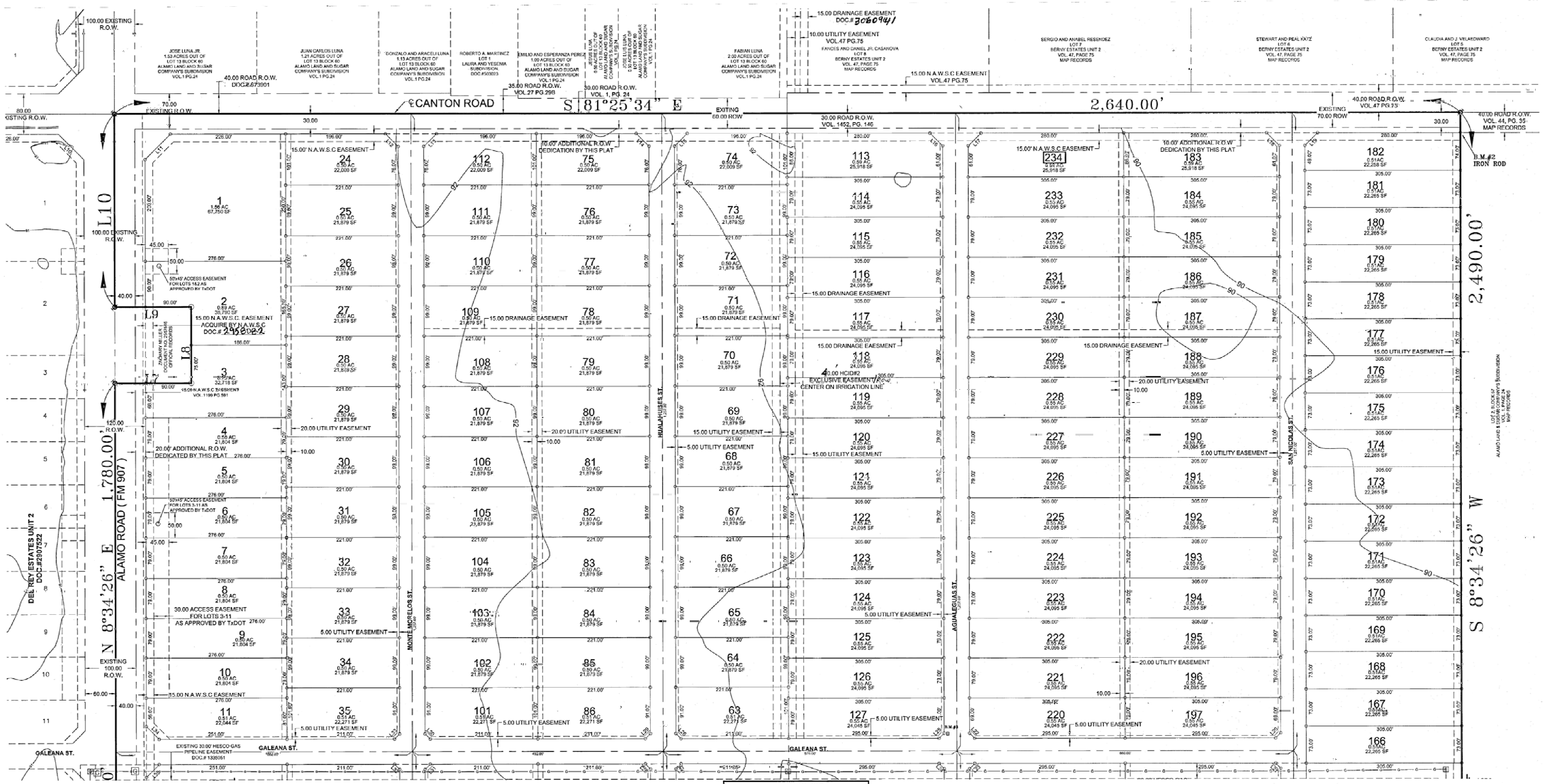
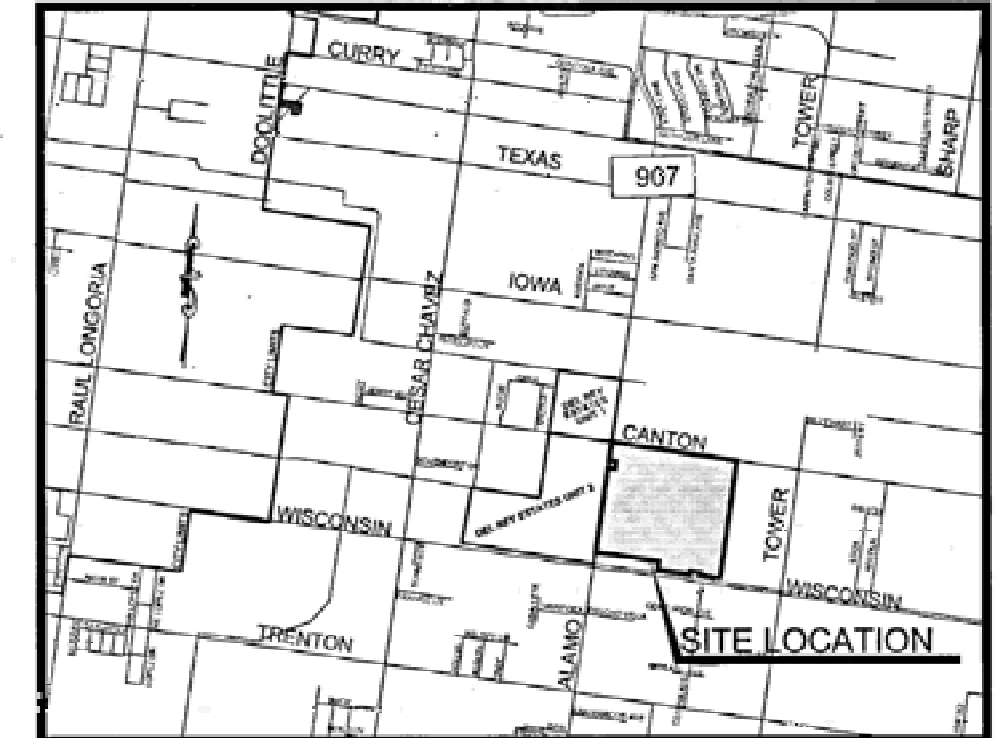


SCALE: 1"=100'



LOCATION MAP



LEGEND

- NAIL SET
- 1/2" IRON ROD SET
- COTTON PICKER
- △ SPINDLE FOUND

INDEX TO SHEETS OF AS DEL REY ESTATES UNIT 3 SUBDIVISION

SHEET 1 OF 2 PLAT	HEADING; INDEX; LOCATION MAP; AND E.T.A. PRINCIPAL CONTACTS; PLAT WITH LOT, STREETS, AND EASEMENT DESIGNATIONS; LEGAL DESCRIPTION (METES AND BOUNDS); SURVEYOR'S AND ENGINEER'S CERTIFICATION; PLAT NOTES AND RESTRICTIONS; OWNER'S DEDICATION, CERTIFICATION, AND ATTESTATION; CITY APPROVAL CERTIFICATE; COUNTY CLERK'S RECORDING CERTIFICATE; HIDALGO COUNTY JUDGE CERTIFICATE OF PLAT APPROVAL; DESCRIPTION OF LOCATION OF SUBDIVISION WITH RESPECT TO THE E.T.A. OF A MUNICIPALITY AND DESIGNATE THE PRECINCT THE PROJECT IS SITUATED; H.C.D.D. NO. 1 CERTIFICATION; H.C.IRRIGATION DISTRICT#2, AND H.C.H.D. CERTIFICATION NOTES.
SHEET 2 OF 2 PLAT	PLAT WITH LOT, STREETS, AND EASEMENT DESIGNATIONS; LEGAL DESCRIPTION, COUNTY CLERKS, SURVEYOR AND ENGINEER'S CERTIFICATIONS;
SHEET 3	WATER DISTRIBUTION AND SANITARY SEWER MAP; ENGINEERING REPORT (ENGLISH AND SPANISH VERSION), INCLUDING DESCRIPTION OF WATER AND WASTE WATER AND ENGINEER'S CERTIFICATION (ENGLISH AND SPANISH VERSION), OWNER'S DEDICATION, CERTIFICATION, AND ATTESTATION, OFFSITE WATER LINE DESIGN.
SHEET 4	MAP OF TOPOGRAPHY AND PAVING AND DRAINAGE, AND ENGINEER'S CERTIFICATION AND 'BROWNE' REPORT INCLUDING DESCRIPTION OF DRAINAGE AND HOW IT WILL SERVE THIS DEVELOPMENT;



FILED FOR RECORD IN HIDALGO COUNTY ARTURO GUERRERO, JR. HIDALGO COUNTY CLERK

ON 11/20/20 AT 4:52 AM 2014 INSTRUMENT NUMBER 307966 DEPUTY

CURVE TABLE

CURVE	ARC LENGTH	RADIUS	DELTA ANGLE	CHORD BEARING	CHORD LENGTH
C1	39.52'	50.00'	45°17'23"	S 31°30'07" W	38.50'
C2	39.52'	50.00'	45°16'59"	S 33°47'05" E	38.50'
C3	39.47'	50.00'	45°13'40"	S 59°02'24" E	38.45'
C4	39.57'	50.00'	45°20'43"	N 75°40'24" E	38.55'
C5	39.57'	56.00'	45°20'43"	S 58°31'33" E	38.55'
C6	39.47'	50.00'	45°13'40"	N 75°11'18" E	38.45'
C7	39.52'	50.00'	45°16'59"	N 30°55'58" E	38.50'
C8	39.52'	50.00'	45°17'23"	N 14°21'26" W	38.50'
C9	39.40'	50.00'	45°09'02"	S 31°34'17" W	38.39'
C10	39.64'	50.00'	45°25'21"	S 34°25'54" E	38.61'
C11	39.47'	50.00'	45°13'40"	S 59°02'24" E	38.45'
C12	39.57'	50.00'	45°20'43"	N 75°40'24" E	38.55'
C13	39.57'	50.00'	45°20'43"	S 58°31'33" E	38.55'
C14	39.47'	50.00'	45°13'40"	N 75°11'18" E	38.45'
C15	39.64'	50.00'	45°25'21"	S 34°25'54" E	38.61'
C16	39.40'	50.00'	45°09'02"	N 14°25'26" W	38.39'

LINE TABLE

NO.	LENGTH	BEARING	NO.	LENGTH	BEARING	NO.	LENGTH	BEARING
L1	438.34'	N 81°25'34" W	L13	35.36'	N 53°34'26" E	L23	14.14'	N 53°34'26" E
L2	66.00'	N 08°34'26" W	L14	35.36'	N 36°25'34" W	L24	14.14'	N 36°25'34" W
L3	208.66'	N 81°25'34" W	L15	35.36'	N 53°34'26" E	L25	14.14'	N 53°34'26" E
L4	66.00'	S 08°34'26" W	L16	35.36'	N 36°25'34" W	L26	14.14'	N 36°25'34" W
L5	680.00'	N 81°25'34" W	L17	35.36'	N 53°34'26" E	L27	14.14'	N 53°34'26" E
L6	180.00'	N 08°34'26" W	L18	35.36'	N 36°25'34" W	L28	14.14'	N 36°25'34" W
L7	150.00'	S 81°25'34" E	L19	35.36'	N 53°34'26" E	L29	14.14'	N 53°34'26" E
L8	150.00'	N 08°34'26" W	L20	14.14'	N 53°34'26" E	L30	14.14'	N 53°34'26" E
L9	150.00'	N 81°25'34" W	L21	14.14'	N 36°25'34" W	L31	14.14'	N 36°25'34" W
L10	360.00'	N 08°34'26" W	L22	14.14'	S 36°25'34" E	L32	14.14'	N 53°34'26" E
L11	70.71'	N 53°34'26" E	L23	14.14'	S 53°34'26" E	L33	14.14'	N 53°34'26" E
L12	35.36'	N 36°25'34" W	L24	14.14'	N 36°25'34" W	L34	14.14'	N 53°34'26" E

STATE OF TEXAS
COUNTY OF HIDALGO

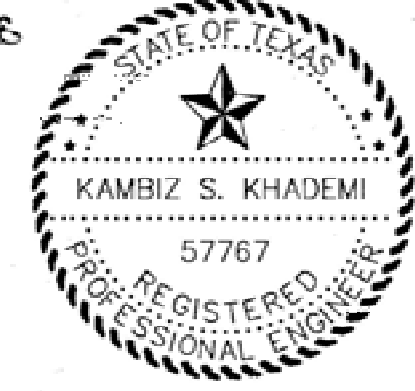
I, THE UNDERSIGNED, A REGISTERED PROFESSIONAL ENGINEER IN THE STATE OF TEXAS, HEREBY CERTIFY THAT PROPER ENGINEERING CONSIDERATION HAS BEEN GIVEN TO THIS PLAT.

I CERTIFY THAT THE WATER AND SEWER SERVICE FACILITIES FOR LOTS INTENDED FOR RESIDENTIAL PURPOSES DESCRIBED ABOVE ARE IN COMPLIANCE WITH THE MODEL RULES ADOPTED UNDER SECTION 64.34, WATER CODE. THE ESTIMATED COST TO INSTALL UNCONSTRUCTED WATER AND SEWER FACILITIES DESCRIBED ABOVE ARE AS FOLLOWS: WATER FACILITIES: THESE FACILITIES WILL BE CONSTRUCTED.

SEWER FACILITIES: (SEWER SERVICE CONNECTION/INSTALLATION OF SEPTIC SYSTEMS) ARE ESTIMATED TO COST \$1,400.00 PER LOT (ALL INCLUSIVE), FOR A TOTAL OF 154 LOTS FOR THIS SUBDIVISION. THE SUBDIVIDER HAS PAID A TOTAL OF \$215,600.00 TO CONTRACTOR, ALREADY INSTALLED TO COVER THE COST OF (SEWER SERVICE CONNECTIONS/INSTALLATION OF SEPTIC SYSTEMS).

DATED THIS 19TH DAY OF July 2014

Kambiz S. Khadem
REGISTERED PROFESSIONAL ENGINEER
No. 52282 STATE OF TEXAS



STATE OF TEXAS
COUNTY OF HIDALGO

I, JOSE MARIO GONZALEZ, REGISTERED PROFESSIONAL LAND SURVEYOR IN THE STATE OF TEXAS, DO HEREBY CERTIFY THAT THIS PLAT IS TRUE AND CORRECTLY MADE FROM AN ACTUAL SURVEY MADE ON THE GROUND IN THE PROPERTY LEGALLY DESCRIBED HEREON, AND THAT THERE IS NO APPARENT DISCREPANCY, CONFLICT, OR OVERLAPPING OF IMPROVEMENTS, VISIBLE UTILITY LINES OR READERS IN PLACE, EXCEPT AS SHOWN ON THE ACCOMPANYING PLAT, AND THAT THE CORNER MONUMENTS SHOWN THEREON WERE PROPERLY PLACED UNDER MY SUPERVISION IN ACCORDANCE WITH THE SUBDIVISION REGULATIONS OF THE CITY OF EDINBURG, TEXAS.

DATED THIS 11TH DAY OF Dec 2014

Jose Mario Gonzalez
REGISTERED PROFESSIONAL SURVEYOR
No. 5271 STATE OF TEXAS



DATE: _____

REVISION: _____

DRAWING DATE: JANUARY, 2015

RELEASE DATE: _____

DESIGNED BY: K.K.

DRAWN BY: F.D.

CHECKED BY: K.K.

UPDATED DWG. BY: _____

SCALE: 1" = 100'

STATE OF TEXAS
KAMBIZ S. KHADEMI
REGISTERED PROFESSIONAL ENGINEER
No. 57767

THE SEAL APPEARING ON THIS DOCUMENT WAS AUTHORIZED BY KAMBIZ S. KHADEMI, P.E. 57767 JANUARY 2015

ALTERATION OF A SEALED DOCUMENT WITHOUT PROPER NOTIFICATION TO THE RESPONSIBLE ENGINEER IS AN OFFENSE UNDER THE TEXAS ENGINEERING PRACTICE LAW

PLAT & LOT DESIGN

DEL REY ESTATES, L.P.
A 144.6 ACRE TRACT OF LAND OUT OF A PART OR PORTION OF LOT 18, BLOCK 67, ALAMO ROAD AND SUGAR COMPANY'S SUBDIVISION, HIDALGO COUNTY, TEXAS ACCORDING TO MAP THEREOF RECORDED IN VOLUME 1, PAGE 24.

PREPARED BY: K.K. ENGINEERING CONSULTANT
DATE: NOVEMBER, 2013

Copyright © 2013 K.K. Engineering Consultant
All Rights Reserved.

PLAT & LOT DESIGN

SHEET 2 OF 4